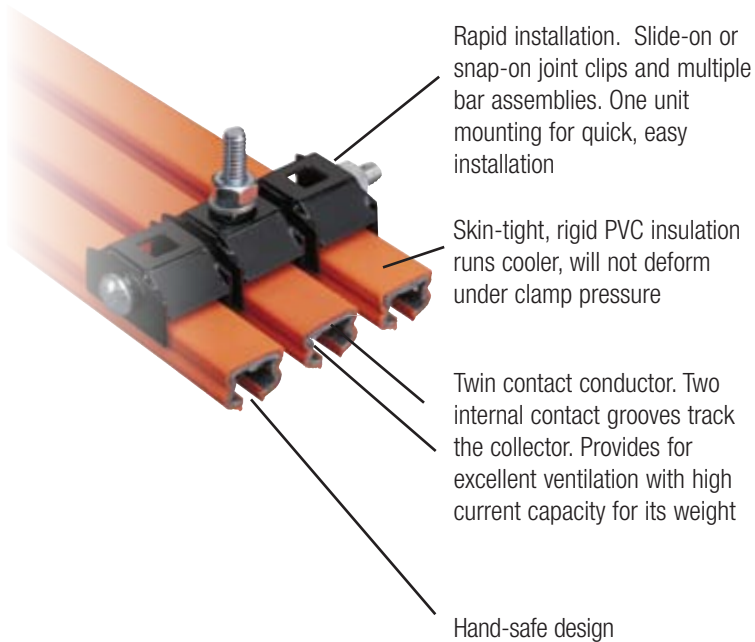


Series T SAF-T-BAR

Series T is Ideal for:

- Light Rail Systems
- Automated Storage and Retrieval Systems
- Conveyors
- Indoor, Dry Locations
- Small cranes, monorails, hoists
- Moving cameras and instruments
- Other mobile power applications



Current capacity¹

TA65 65 amps

Material

TA65 Galvanized Steel Rail with Rigid PVC Insulation rated at 160°F

Other features

- Collector is "captured" within the "twin-contact" conductor profile of the bar, assuring good contact
- Compact dimensions for efficient use of minimal space. One square inch per conductor.
- Modular design of this system facilitates use of multiple conductors easily mounted in various combinations with multiple collector assemblies.

Atmospheric specifications

Series T Saf-T-Bar is not recommended for dirty applications.

Insulating hanger option

A spool mount insulator hanger option is available as an alternative.

Insulating cover options

Insulating covers are rigid PVC extrusions rated at 160°F operating temperature and Lexan extrusions rated at 260°F. Both materials are self-extinguishing.

¹Ampere ratings are based on continuous service with a 30°C rise.

DISTRIBUTED BY:



Toll Free: 1.888.822.2024
International: 1.519.822.2020
Fax: 1.519.822.2140
Email: info@ipandc.com
Web: www.ipandc.com

Series T Conductor Bar Characteristics



Series T conductor bars are constructed of roll-formed galvanized steel and are supplied with rail insulation along with the joint kit pre-mounted to one end of the conductor bar. The galvanized steel version provides a current capacity of 65 Amps at 30°C ambient temperature and continuous duty.

Description	TA65
Material	Galvanized Steel
Nominal current (Amps) ¹	65
DC resistance (ohms/ft)	0.0007
AC Impedance (ohms/ft at 60Hz)	0.0018
Weight	3.0 lb per 10 ft bar (1.36 per 3.05 m bar)
Max. Voltage (V)	600
Support Spacing (ft)	5.0
Standard Rail Length (ft)	10 feet - Other lengths on request
Maximum Rail Temperature	160°F at 260 PSI (standard cover) 260°F at 260 PSI (high temperature Lexan cover)
Conductor Mounting Orientation	Can be installed in either vertical or horizontal mode
Curves	Can be curved in our factory to a 12" (305 mm) minimum radius, using 30 Amp collector shoes.

Basic Series T Part Numbers								
Bar Type	Phase Bar Part No. ²	Ground Bar Part No. ³	Med Heat Bar Part No. ⁴	Joint Kit Std Heat Part No. ⁶	Joint Kit Med Heat Lexan Part No. ⁴	Power Feed Part No.	Power Feed Med. Heat Lexan Part No.	End Cap Part No. ⁷
TA65	TA65X10	TA65X10G	TA65HHX10	TJ65	TJ65HH	TF100	TF100HH	TN100C

¹ Nominal current is based on 30°C and is for 100% duty.

² Complete with normal phase rail cover, orange rigid PVC, 160°F heat distortion point, 260psi, self extinguishing.

³ Complete with ground rail cover, green rigid PVC, 160°F heat distortion point, 260psi, self extinguishing.

⁴ Complete with red Lexan medium heat cover, 260°F heat distortion point, 260psi, self extinguishing.

⁶ Series T conductor kits are provided with the rail joint pre-mounted to the rail. If special cuts are required, use this part number to order the extra joint kit

⁷ End caps available for "standard heat" applications only.

Series T Components

Splice Joint Kit



Connects and aligns standard 10' conductor lengths. Consists of a 4" joint cover that slides over the exposed joint area to complete the insulation. The joint cover locks in place by means of indents and is formed of the same material as the insulating conductor cover. Splice joints are pre-installed on one of complete conductor

Part No.

TJ65

Powerfeeds



The TF100 is a terminal lug with insulating cover that clamps onto a 3/4" (19.1 mm) length of bare conductor to feed power to the bar. It will accept wires up to # 6 flex. Rated at 100 amperes. The conductor may also be fed by securing a standard terminal lug to the 1/4" hole in the end of the conductor and taping over it for insulation.

Part No.

TF100

End Caps



End Cap TN100C is a sleeve required to complete the insulation of the conductor. It extends 1/2" (13 mm) over the end of the bar. As an alternative, the conductor may be cut back so that the regular insulating cover extends 1/2" beyond the end of the conductor. End Cap may also be used as a transfer end cap having a $\pm 1/8"$ (± 3.2 mm) tolerance with a 1" (25 mm) gap setting on interlocks.

Part No.

TN100C

Isolation Sleeves



A rigid plastic sleeve, providing 1/2" (13 mm) over-surface gap electrically, for electrical segmentation of conductor bars. A self-supporting sleeve.

Part No.

TA65IS

Hanger Mounting Clamps



TH402

Nylon coated stamped steel hanger clamps. Can be furnished in multiples on 1" (25 mm) centers. Can be mounted using cross bolt or back bolt. Bolts are 1/4" and require a 5/16" mounting hole. Hangers are required every 5' (1.52 m) of conductor. Joints should be located not more than 3" (76.2 mm) from hangers to avoid flexing.

Phase	Part No.
1	TH101
2	TH201
3	TH301
4	TH402
5	TH502

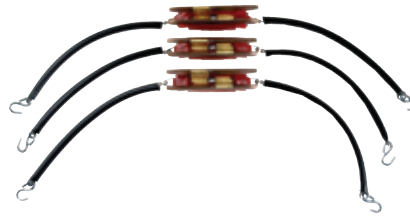
Note: A spool mount insulator hanger option is available as an alternative - Contact Factory

Series T Collectors and Tow Bar

Collectors with self-lubricating contacts for quiet operation and long life. Multiple collectors will be supplied as single units times the number of phases



TE501CR / TE501SC



TE503CR / TE503SC

# Poles	Shoe Size	Towlines Included?	Shoe Matl	Recommended For:	Cap.	Part No.
Single	Short	Yes	Chromium Copper	Systems with bend radii tighter than 48"	30 A	TE301CR
Single	Short	No	Copper Graphite	Systems using special towing arrangements	30 A	TE301ASCR
Dual	Short	Yes	Chromium Copper	Systems with bend radii tighter than 48"	30 A	TE302CR
Triple	Short	Yes	Chromium Copper	Systems with bend radii tighter than 48"	30 A	TE303CR
Single	Standard	Yes	Chromium Copper	Most systems without tight radii	50A	TE501CR
Single	Standard	No	Chromium Copper	Systems without tight radii	50A	TE501ASCR
Dual	Standard	Yes	Chromium Copper	Most systems without tight radii	50A	TE502CR
Triple	Standard	Yes	Chromium Copper	Systems without tight radii	50A	TE503CR
Single	Standard	Yes	Copper Graphite	Systems in the food industry	50A	TE501SC
Single	Standard	No	Copper Graphite	Food industry applications using special towing	50A	TE501ASSC
Dual	Standard	Yes	Copper Graphite	Systems in the food industry	50A	TE502SC
Triple	Standard	Yes	Copper Graphite	Systems in food industry	50A	TE503SC

Tow Bar



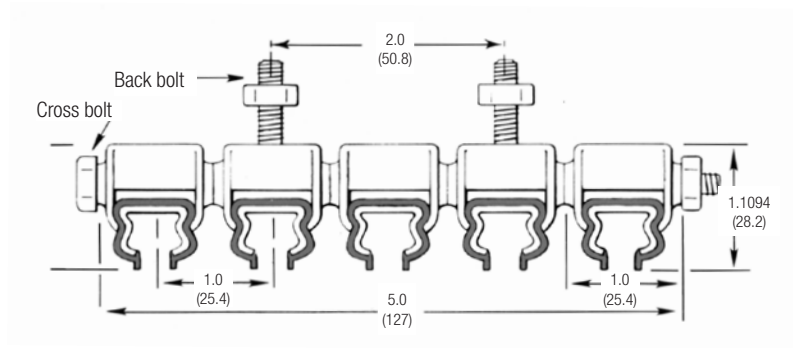
The Tow Bar is an optional mounting bracket for Series T collectors. It is designed to mount to a 1" (25.4 mm) square bar and connect to the standard towlines supplied with the Series T collector assemblies. The threaded rod is 18 inches long and is equipped with a clip at each end which provides a connection point for the S-hook at the end of the T-bar towlines. The TB18 will provide the proper angle of pull to ensure smooth travel of the collectors as they are pulled through the rail.

Part No.

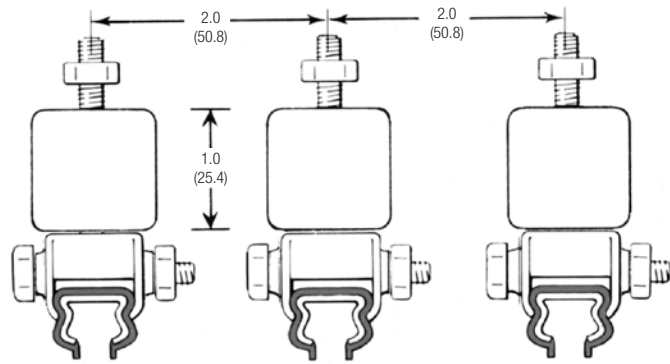
TB18

Series T Dimensions

Hanger Mounting Clamps

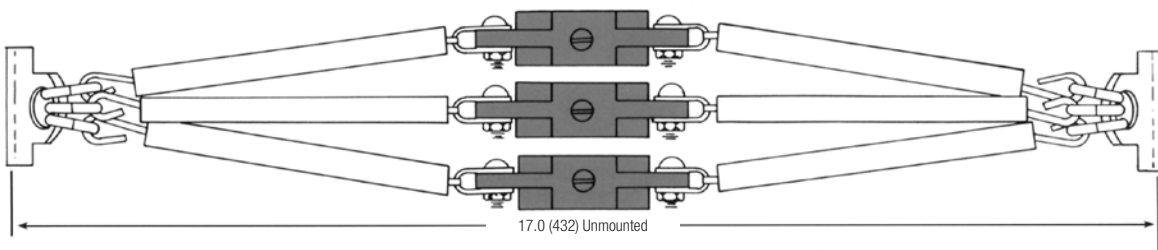
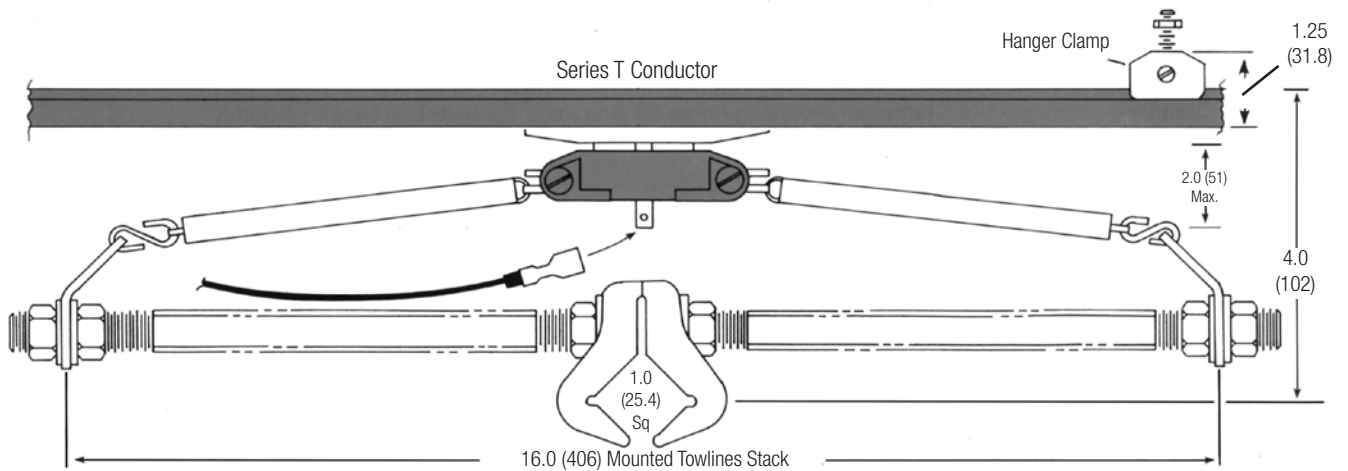


Standard Hangers



With Optional Insulator Spools

Collectors



Unmounted Collector Assembly

Multiple collectors will be supplied as single units times the number of phases.